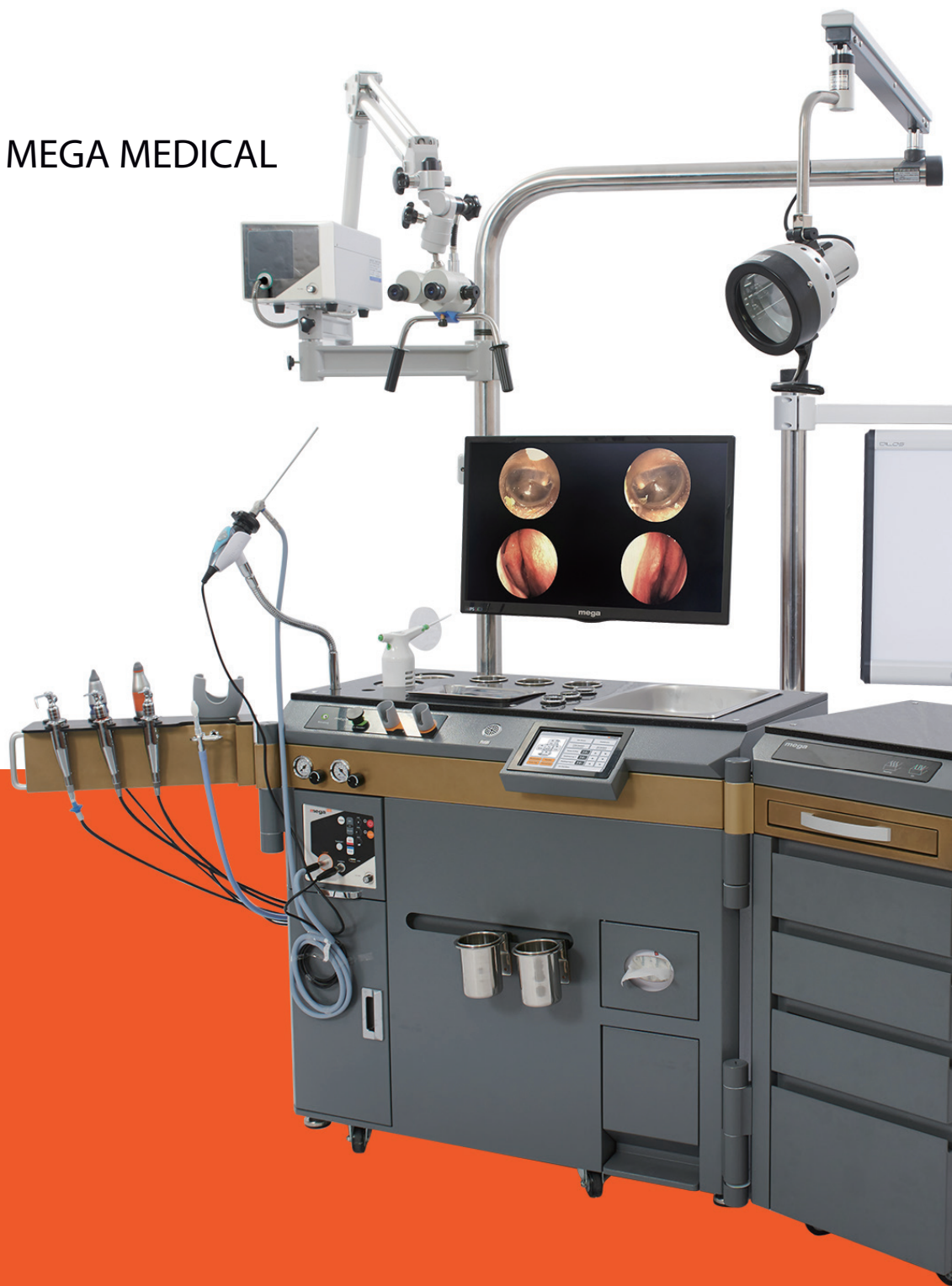


КАТАЛОГ

на оборудование MEGA MEDICAL



Алматы (7273)495-231
Ангарск (3955)60-70-56
Архангельск (8182)63-90-72
Астрахань (8512)99-46-04
Барнаул (3852)73-04-60
Белгород (4722)40-23-64
Благовещенск (4162)22-76-07
Брянск (4832)59-03-52
Владивосток (423)249-28-31
Владикавказ (8672)28-90-48
Владимир (4922)49-43-18
Волгоград (844)278-03-48
Вологда (8172)26-41-59
Воронеж (473)204-51-73
Екатеринбург (343)384-55-89

Иваново (4932)77-34-06
Ижевск (3412)26-03-58
Иркутск (395)279-98-46
Казань (843)206-01-48
Калининград (4012)72-03-81
Калуга (4842)92-23-67
Кемерово (3842)65-04-62
Киров (8332)68-02-04
Коломна (4966)23-41-49
Кострома (4942)77-07-48
Краснодар (861)203-40-90
Красноярск (391)204-63-61
Курск (4712)77-13-04
Курган (3522)50-90-47
Липецк (4742)52-20-81

Магнитогорск (3519)55-03-13
Москва (495)268-04-70
Мурманск (8152)59-64-93
Набережные Челны (8552)20-53-41
Нижний Новгород (831)429-08-12
Новокузнецк (3843)20-46-81
Ноябрьск (3496)41-32-12
Новосибирск (383)227-86-73
Омск (3812)21-46-40
Орел (4862)44-53-42
Оренбург (3532)37-68-04
Пенза (8412)22-31-16
Псков (8112)59-10-37
Петрозаводск (8142)55-98-37
Пермь (342)205-81-47

Ростов-на-Дону (863)308-18-15
Рязань (4912)46-61-64
Самара (846)206-03-16
Саранск (8342)22-96-24
Санкт-Петербург (812)309-46-40
Саратов (845)249-38-78
Севастополь (8692)22-31-93
Симферополь (3652)67-13-56
Смоленск (4812)29-41-54
Сочи (862)225-72-31
Ставрополь (8652)20-65-13
Сыктывкар (8212)25-95-17
Тамбов (4752)50-40-97
Сургут (3462)77-98-35
Тверь (4822)63-31-35

Тольятти (8482)63-91-07
Томск (3822)98-41-53
Тула (4872)74-02-29
Тюмень (3452)66-21-18
Ульяновск (8422)24-23-59
Улан-Удэ (3012)59-97-51
Уфа (347)229-48-12
Хабаровск (4212)92-98-04
Чебоксары (8352)28-53-07
Челябинск (351)202-03-61
Череповец (8202)49-02-64
Чита (3022)38-34-83
Якутск (4112)23-90-97
Ярославль (4852)69-52-93

Россия (495)268-04-70

Казахстан (772)734-952-31

Киргизия (996)312-96-26-47

ENT UNIT NET-4000



Features

- LCD Touch Screen
- Suction Hose Rinsing System (Option)
- Built-in Endoscope Holder with UV Sterilizer
- Built-in Endoscope Liquid Sterilizer
- Pivotal Instrument Cabinet
- Central Water Supply and Auto Drainage System (Option)

Specifications

Compressor Pump	0.9~3.0kg/cm ²
Vacuum Pump	above 500mmHg
Suction Bottle	2,500cc
Anti-Fog Device	working time: 15 sec
Power Consumption	770VA
Operating Voltage	AC 230V (single-phase three wire system)
Frequency	50/60Hz
Suction Rate	Min. 2,000 cc /m
Spray Rate	Min. 5 cc /m
Weight	180kg
Dimension (mm)	1,773(W) x 677(D) x 1,213(H)
ESL	10 years (Motor life time)



Adjustable Valve for Pressure of Suction and Spray with Gauge



Endoscope Holder with UV Sterilizer



Pivotal Arm

Standard Accessories

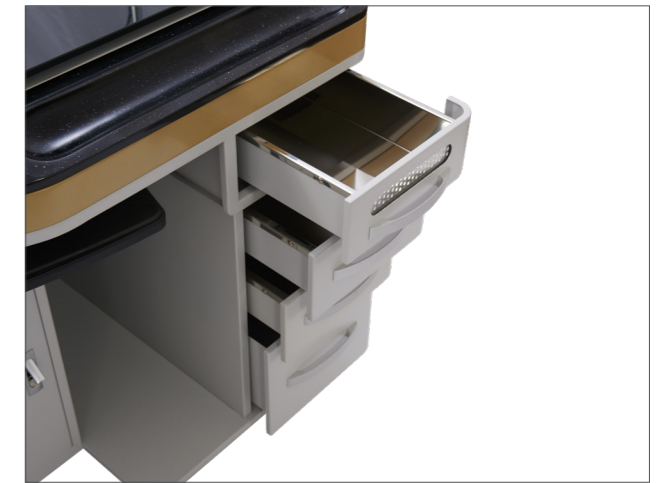
Straight Sprayer	2
Curved Sprayer	1
Suction Unit	1
Pressure Gauge (Sprayer, Suction)	2
Stainless Cups	2
Heating Cup	2
Gauze Container	2
Control Keypad(LCD Touch)	1
UV Endoscope Sterilizer	2
Endoscope Holder for Liquid Sterilization	3
Ear Dryer	1
Eustacure	1
Anti-Fog	1
Bin(Waste Basket)	1
Tissue Container	1
Camera Holder	1
Instrument Tray	2
Instrument Cabinet	1
-4 step Drawers	
-Heating Drawers	
-UV Sterilizer Drawers	
-Chart Table	

Optional Accessories

Endoscopy Visual System	View Box
Monitor	Powder Sprayer
Endoscope	Endoscope Sterilizer
Microscope	Wireless Head Light
CWS & ADS	Patient Chair
Suction Hose Rinsing System	Doctor's Stool Chair
Ear Irrigation Bottle with Funnel	Glass Bottle
Illumination	

ENT UNIT

NET-3000A



Features

- Full-scale Luxury ENT Unit
- 2 Suction Units & 4 Sprayers
- Exclusive Space for PC and Keyboard
- Central Water Supply and Auto Drainage System (Option)

Specifications

Compressor Pump	0.9~3.0kg/cm ²
Vacuum Pump	above 500mmHg
Suction Bottle	2,500cc
Anti-Fog Device	working time: 15sec
Power Consumption	490VA
Operating Voltage	1100/220V
Frequency	50/60Hz
Suction Rate	Min. 2,000 cc /m
Spray Rate	Min. 5 cc /m
Weight	250kg ± 10%
Dimension (mm)	1,908(W) X 708(D) X 785(H) ± 10%
ESL	10 years (Motor life time)

Standard Accessories

Straight Sprayer	3
Curved Sprayer	1
Suction Unit	2
Stainless Cups	9
Gauze Container	4
Glass Bottle	14
Instrument Container w/ UV Sterilizer	1
Anti-Fog	1
Bin(Waste Basket)	1
Keyboard Tray	1
Tissue Container	1
Camera Holder	1
Instrument Tray	1
Pen Light	1

Optional Accessories

Endoscopy Visual System Monitor	Operating Otoscope Illumination
Endoscope	View Box
Microscope	Powder Sprayer
CWS & ADS	Endoscope Sterilizer
Ear Irrigation System	Wireless Head Light
Heating Cup	Instrument Container w/ Heating
Ear Dryer	Patient Chair
Eustacure	Doctor's Stool Chair

ENT UNIT NET-600A



Features

- Cost Effective Mid-size ENT Unit
- 2 Separate Suction Units
- Central Water Supply and Auto Drainage System

Specifications

Compressor Pump	0.9~3.0kg/cm ²
Vacuum Pump	above 500mmHg
Suction Bottle	2,500cc
Anti-Fog Device	working time: 15 sec
Power Consumption	800VA
Operating Voltage	AC 230V (single-phase three wire system)
Frequency	50/60Hz
Suction Rate	Min. 2,000 cc /m
Spray Rate	Min. 5 cc /m
Weight	130kg
Dimension (mm)	Main Unit : 1,295(W) X 445(D) X 865(H) ± 10% Chart Table : 435(W) X 445(D) X 865(H) ± 10%
ESL	10 years (Motor life time)

Standard Accessories

Straight Sprayer	3
Suction Unit	2
Stainless Cups	2
Heating Cup	1
Gauze Container	2
Glass Bottle	4
Anti-Fog	1
Bin(Waste Basket)	1
Camera Holder	1
Instrument Tray	1
Pen Light	1

Optional Accessories

Chart Table	Operating Otolaryngoscope
Endoscopy Visual System	Illumination
Monitor	View Box
Endoscope	Powder Sprayer
Microscope	Endoscope Sterilizer
CWS & ADS	Wireless Head Light
Ear Irrigation System	Patient Chair
Ear Dryer	Doctor's Stool Chair
Eustacure	

ENT UNIT NET-1100



Features

- Compact Size ENT Unit
- Enhanced Mobility
- Instrument Cart Attachable (Option)

Specifications

Compressor Pump	0.9~3.0kg/cm ²
Vacuum Pump	above 500mmHg
Suction Bottle	2,500cc
Anti-Fog Device	working time: 15 sec
Power Consumption	413VA
Operating Voltage	AC 230V (single-phase three wire system)
Frequency	50/60Hz
Suction Rate	Min. 2,000 cc /m
Spray Rate	Min. 5 cc /m
Weight	40kg
Dimension (mm)	Main: 760(W) X 620(D) X 1,070(H) Cart: 500(W) X 500(D) X 975(H)
ESL	10 years (Motor life time)

Standard Accessories

Straight Sprayer	2
Suction Unit	1
Stainless Cups	2
Heating Cup	1
Gauze Container	2
Glass Bottle	2
Anti-Fog	1
Instrument Tray	2

Optional Accessories

Instrument Cart	Eustacure
Endoscopy Visual System	Pen Light
Monitor	Operating Otolaryngoscope
Endoscope	Endoscope Sterilizer
Microscope (Stand Type)	Wireless Head Light
Ear Irrigation Bottle with Funnel	Patient Chair
Powder Sprayer	Doctor's Stool Chair
Ear Dryer	



Instrument Cart

ENT UNIT

Optional Accessories



Ear Irrigation Kit



Operating Otoscope



Medical Monitor



Endoscope Sterilizer



Wireless Head Light



View Box



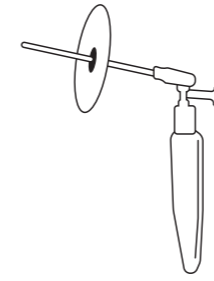
Powder Sprayer



Eustacure



Ear Dryer



CWS & ADS



Portable Pen Light



Consumable parts for Suction Gun



Microscope



Illumination



Pen Light



Doctor's Stool Chair

ENT Endoscopy Visual System VS-3CL



Features

- Specialized in ENT Surgery using the 3CMOS Visual System
- High Quality LED Light Source
- Light Source CCT 6000K, CRI 90
- Variable Light Intensity

Specifications

Image Sensor	1/3" 3CMOS FHD
Lens	15~25mm C-mount
Scan Type	Progressive scan
Image Resolution	1,920 x 1,080
Aspect Ratio	16:9
Capture Mode	1/AVI
Frame Rate	60p
Recording Media	USB memory, SD-CARD
Video Output	HD-SDI (2Port), DVI (1Port)
Voltage	110-230V
Frequency	50/60Hz
Power Consumption	Camera: Approx. 50W, Light Source: Approx. 70W
Weight	Main Body & Light Source : Approx. 3kg Camera : Approx. 100g
Dimension	Main Body & Light Source : 260mm (W) x 270mm (D) x 71mm (H) ± 10 % Camera : 49mm(W) x 131mm(D) ± 10 %

Standard Accessories

3CMOS Full-HD Camera	1
3 Way Foot Switch	1
Light Guide	1
Video Cable	1
Power Cord	1

Optional Accessories

Medical Monitor
Monitor Holder
Cart
Camera Holder
Endoscope

ENT Endoscopy Visual System VS-DUAL



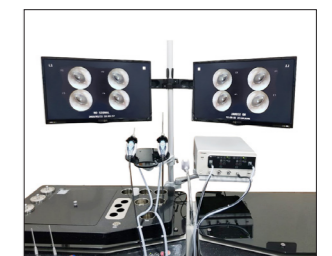
Features

- Auto Change Channel System
- AWB (Auto White Balance) Function
- MWB (Manual White Balance) Mode
- IRIS 21 STEPS
- AGC (Auto Gain Control) Function (on/off/up)
- SHARP 10 Steps
- DNR (Digital Noise Reduction) 11 Steps
- Black 10 Steps
- HUE 10 Steps
- LUXSEN Function (on/off)
- USB Memory

Specifications

	FHD	HD
Image Sensor	1/3" CMOS FHD	1/3" CMOS HD
Scan Type	Progressive Scan	
Image Resolution	1,920 x 1,080	1,280 x 720
Capture Mode	1/ 2/ 4/ AVI	
Aspect Ratio	16:9	
Resolution (H)	1000TVL	800TVL
Video Output	HDMI (2ports)	
Voltage	220V	
Frequency	50/60Hz	
Power Consumption	120VA	
Weight	Main Body	Approx. 6.5kg
	Camera	Approx. 300g
Dimension	Main Body	325mm (L) x 373mm (D) x 150mm (H) ± 10 %
	Camera	55mm(W) x 120mm(D) x 55mm (H) ± 10 %

Attached to ENT Unit



Standard Accessories

Camera (FHD / HD)	2
Foot Switch	1
Light Guide	1
Video Cable	1
S-Video Cable	1
Power Cord	1

Optional Accessories

Medical Monitor
Monitor Holder
Customized Shelf
Cart
Camera Holder
Endoscope

ENT Endoscopy Visual System

NET-260SLCB

FHD



HD



SD



Features

FHD / HD

- Attachable to ENT Unit
- Auto Change Channel System
- AWB (Auto White Balance) Function
- MWB(Manual White Balance) Mode
- IRIS 21 STEPS
- AGC (Auto Gain Control) Function (on/off/up)
- SHARP 10 Steps
- DNR (Digital Noise Reduction)11 Steps
- Black 10 Steps
- HUE 10 Steps
- LUXSEN Function (on/off)
- USB Memory

SD

- Attachable to ENT Unit
- AWB (Auto White Balance) Function
- AGC(Auto Gain Control) Function(on/off/up)
- Auto Color Modification
- USB Memory

Specifications

	FHD	HD	SD
Image Sensor	1/3" CMOS FHD	1/3" CMOS HD	1/3" CCD Super HAD
Scan Type	Progressive Scan		Interlaced Scan
Image Resolution	1,920 x 1,080	1,280 x 720	976 x 494
Capture Mode	1/ 2/ 4/ AVI		
Resolution (H)	1000TVL	800TVL	670TVL
Video Output	HDMI (2ports)		HDMI
Voltage	220V		
Frequency	50/60Hz		
Power Consumption	310mA / +6V	120VA	270VA
Weight	Main Body	Approx. 4kg	
	Camera	Approx. 220g	
Dimension	Main Body	165(W) x 326(D) x 145(H) mm	
	Camera	46(W) x 127.4(D) x 55.6(H) mm	
PC Connection	0	0	X
USB Still Image Capture	0	0	0
USB Video Recording	0	0	X

Standard Accessories

Camera (FHD / HD / SD)	1
Foot Switch	1
Light Guide	1
Video Cable	1
S-Video Cable	1
Power Cord	1

Optional Accessories

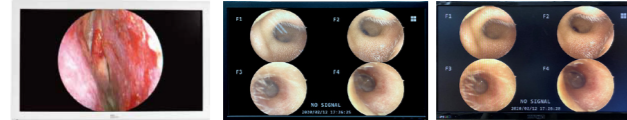
- Medical Monitor
- Monitor Holder
- Camera Holder
- Endoscope

ENT Endoscopy Visual System

Optional Accessories

Monitor

Model	27"	23.8"	24"
Application	Surgery	Diagnosis	Diagnosis



Flexible Nasopharyngoscope

Model	NET-300NS	NET-340NS
Diameter	2.8mm	3.4mm
Working Length	300mm	300mm
Angle of View	70°	70°
Bending	up/down 150°	up/down 150°



Endoscope

Category	Specification	Standard	RLP
Otoscope	0°, 3.0mm, 60mm	0	X
Otoscope	0°, 3.0mm, 90mm	0	X
Otoscope	0°, 2.7mm, 110mm	0	X
Otoscope	0°, 4.0mm, 50mm	0	X
Sinuscope	0°, 4.0mm, 175mm	0	X
Sinuscope	30°, 4.0mm, 175mm	0	0
Sinuscope	70°, 4.0mm, 175mm	0	0
Laryngoscope	70°, 5.0mm, 175mm	0	0
Laryngoscope	90°, 8.0mm, 175mm	0	0
HD Otoscope	0°, 4.0mm, 185mm	0	X
HD Sinuscope	30°, 4.0mm, 185mm	0	0
HD Sinuscope	45°, 4.0mm, 185mm	0	0
HD Laryngoscope	70°, 4.0mm, 185mm	0	0



Cart

Dimensions (W x D x H)	328 x 365 x 1,200 mm
Weight	40kg



ENT Chair NET-1500



NET-1500A



NET-1500D



NET-1500E

Model	1500A	1500D	1500E
Backrest Inclination	0~95°	0~95°	0~60°
Base Diameter	580mm	550mm	550mm
Seat Elevation Stroke	520-820mm	550-850mm	500-800mm
Rotating Angle	360°	360°	360°
Chair Rotation	Auto	Manual	Manual
Up/Down Adjustment	Auto	Auto	Auto
Forward/Backward Adjustment	Auto	Auto	Manual
Auto Return	0	0	X
Headrest Adjustment	0	0	X
Armrest Rotation	0	0	X
Seat Material	Artificial Leather	Artificial Leather	Artificial Leather
Color	Blue	Gray	Gray
Voltage, Frequency	220V, 60Hz	230V,50/60Hz	230V,50/60Hz
Dimension (mm)	990(W) X 600(D) X 1,450(H)	780(W) X 585(D) X 1,180(H)	780(W) X 585(D) X 1,180(H)
Weight	95 kg	90kg	75kg
Consumption Power	545VA	600VA	600VA
ESL (Cylinder life time)	10 years	10 years	10 years
Foot Switch	0	0	0

Алматы (7273)495-231
Ангарск (3955)60-70-56
Архангельск (8182)63-90-72
Астрахань (8512)99-46-04
Барнаул (3852)73-04-60
Белгород (4722)40-23-64
Благовещенск (4162)22-76-07
Брянск (4832)59-03-52
Владивосток (423)249-28-31
Владикавказ (8672)28-90-48
Владимир (4922)49-43-18
Волгоград (844)278-03-48
Вологда (8172)26-41-59
Воронеж (473)204-51-73
Екатеринбург (343)384-55-89

Иваново (4932)77-34-06
Ижевск (3412)26-03-58
Иркутск (395)279-98-46
Казань (843)206-01-48
Калининград (4012)72-03-81
Калуга (4842)92-23-67
Кемерово (3842)65-04-62
Киров (8332)68-02-04
Коломна (4966)23-41-49
Кострома (4942)77-07-48
Краснодар (861)203-40-90
Красноярск (391)204-63-61
Курск (4712)77-13-04
Курган (3522)50-90-47
Липецк (4742)52-20-81

Магнитогорск (3519)55-03-13
Москва (495)268-04-70
Мурманск (8152)59-64-93
Набережные Челны (8552)20-53-41
Нижний Новгород (831)429-08-12
Новокузнецк (3843)20-46-81
Ноябрьск (3496)41-32-12
Новосибирск (383)227-86-73
Омск (3812)21-46-40
Орел (4862)44-53-42
Оренбург (3532)37-68-04
Пенза (8412)22-31-16
Петрозаводск (8142)55-98-37
Псков (8112)59-10-37
Пермь (342)205-81-47

Ростов-на-Дону (863)308-18-15
Рязань (4912)46-61-64
Самара (846)206-03-16
Саранск (8342)22-96-24
Санкт-Петербург (812)309-46-40
Саратов (845)249-38-78
Севастополь (8692)22-31-93
Симферополь (3652)67-13-56
Смоленск (4812)29-41-54
Сочи (862)225-72-31
Ставрополь (8652)20-65-13
Ськтывкар (8212)25-95-17
Тамбов (4752)50-40-97
Сургут (3462)77-98-35
Тверь (4822)63-31-35

Тольятти (8482)63-91-07
Томск (3822)98-41-53
Тула (4872)74-02-29
Тюмень (3452)66-21-18
Ульяновск (8422)24-23-59
Улан-Удэ (3012)59-97-51
Уфа (347)229-48-12
Хабаровск (4212)92-98-04
Чебоксары (8352)28-53-07
Челябинск (351)202-03-61
Череповец (8202)49-02-64
Чита (3022)38-34-83
Якутск (4112)23-90-97
Ярославль (4852)69-52-93

Россия (495)268-04-70

Казахстан (772)734-952-31

Киргизия (996)312-96-26-47